

PILLA®

PERFORMANCE EYEWEAR

2016

WWW.PILLASPORT.COM

LENSES BY

ZEISS

**EVOLVING THE SCIENCE OF
SHOOTING SPORTS VISION**



WE KNOW...

WE KNOW WE CREATE SPORTS EYEWEAR THAT ADDS VALUE TO AN ATHLETES PERFORMANCE.

WE KNOW FUNCTION RULES OVER STYLE.

WE KNOW SUBSTANCE TRUMPS HYPE.

WE KNOW ANYTHING LESS THAN PERFECTION IS NOT WORTH DOING.

For over 20 years, Pilla Performance Eyewear has believed that if we follow these simple beliefs, we would be able to confidently rise everyday knowing that we stand alone in providing the very best in performance eyewear.

We thank you for the opportunity to present you with the finest visual equipment in the world for shooting sports.

We thank the best athletes in the world for embracing our technology and making Pilla a integral part of their competitive gear.

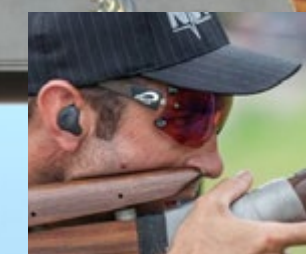
**the simple truth:
you can't hit what you can't see.**



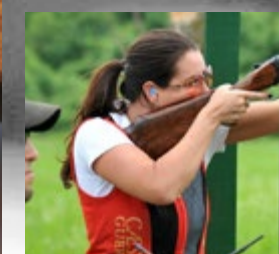
HAKAN DAHLBY
OLYMPIC SILVER MEDALIST - SWEDEN



DERRICK MEIN
GOLD MEDAL 2015 DUBAI CLASSIC



BRAD KIDD Jr.
USA NATIONAL CHAMPION - USA



TANYA FAULDS
TEAM ENGLAND



MARK WINSER
GREAT BRITAIN



ZEISS VIVX A PILLA EXCLUSIVE



We outfit the majority of professional shooters in the world with our visual equipment. We have stood on more podiums in the world championships over the past 15 years than any other eyewear manufacturer servicing the shooting sports community.

We outfit the most decorated shotgun shooter of the last 4 decades, George Digweed MBE, with our performance enhancing technologies. 8 of the 9 men's shotgun Olympic medalists in 2012 in London used our visual equipment to realize their dream of winning an Olympic medal. Vincent Hancock won his second Gold Medal wearing our Max Orange Technology. This achievement was an affirmation of our determination to provide a singularly unique piece of equipment for shooters capable of delivering visual precision.

We have partnered with Zeiss to offer the finest in visual lens science. Carl Zeiss has been producing optical perfection since 1846 and is recognized as the international leader in optics. For over 165 years, Carl Zeiss has accepted nothing less than creating the industry standard. Pilla is proud to engineer the finest products in the world with a company that holds the same beliefs. "We make sport visible."

With Zeiss we have created a benchmark lens technology called VIVX. VIVX is a rich color enhancement technology, tuned to maximize the perceptive ability of the eye in a variety of lighting conditions and environmental backgrounds.

We are proud to have achieved a level of product engineering that carries both the Pilla and ZEISS



Eye fatigue is an area of sport science that is often overlooked by athletes, coaches, and trainers. When it comes to shooting sports eye fatigue is the difference between a Gold Medal and no medal.

There are a variety of elements that are direct drains on the eye's ability to perform. Pilla addresses these issues by focusing on eye fitness. How can we create a technology to maintain and enhance eye fitness?

We partnered with ZEISS to create a technology to manage eye fitness and provide athletes with eye energy for extended periods of time. We do this by using an optically correct lens with tuned color filtration while also focusing on delivering optically perfect frame systems. Eye fitness is maintained by using a lens substrate that does not create a distortive visual picture that the eye must continually adjust to. A sub-standard lens substrate makes your eye muscle feel like it's doing arm curls all day long... eventually your arm gets tired, so does your eye. Your eye has the same issues when it continually needs to adjust to find focus. A sub standard lens material like polycarbonate is only one factor in creating the strain on your eye. Managing light is another factor in maintaining eye fitness. Allowing too much or too little light into the eye strains the eye.

Pilla utilizes ZEISS VIVX, our exclusive lens science, to manage light, maximize color filtration, and provide the athlete with a level of clarity found only in Pilla lenses.



VIVX LENS FILTRATIONS ARE SPECIFICALLY CALIBRATED TO AMPLIFY VARIOUS TARGET AND FEATHER COLORS IN SPECIFIC LIGHTING CONDITIONS USING A SPECTROPHOTOMETER



A Spectrophotometer in ZEISS labs is used to tune our current lens filtrations. ZEISS VIVX lenses deliver higher color recognition and increase visual aptitude as well as depth of field.

Light boxes are used to simulate various lighting conditions an athlete and hunter experiences in sighting a target or live game. Our ZEISS VIVX lenses manipulate the way the human eye sees color. Tuning vision for both lighting condition and color registration is a very complex science. For the last 20 years we have been continually tuning our filtration curves and the our ZEISS VIVX lenses have produced the most robust filtration system yet.

INFUSED VIVX LENS FILTRATION - A EXCLUSIVE PILLA ZEISS SCIENCE



PILLA ZEISS lens technologies are the only non-prescription lenses in the world that meet the same optical standards required for ophthalmic lenses.

Our Zeiss Vivx lenses exceed the international standards set for:

- LENS ABRASION • COATING ADHESION • COATING DURABILITY • COLOR CONSISTENCY
- PRISM IN BALANCE • REFRACTIVE POWER • INTERNAL REFLECTION





LENS CERTIFICATION

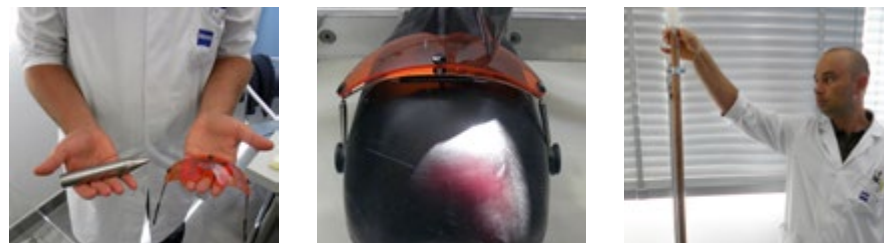
**ZEISS AUTHENTICITY
IF IT DOESN'T HAVE A "Z",
IT'S NOT ZEISS.**

Pilla Performance Eyewear engineers the finest shooting and archery eyewear in the world. We have partnered Zeiss, the internationally recognized leader in optics to offer a new high performance lens science worthy of carrying the ZEISS name. Every product we manufacture which carries the ZEISS logo has been certified by ZEISS engineers to be optically correct and meet a strict standard of excellence. Our new ZEISS lens technologies utilize a proprietary formulation that manages light while enhancing color and is only found in Pilla products.

Our Pilla/ZEISS technologies deliver a visual experience unmatched in sports specific eyewear.

LENS WEATHER STRESS TEST & IMPACT RESISTANCE

HIGH MASS TEST - ANSI Z87.1 2010



To pass the test, the lens must be able to withstand the blunt impact of a 500g steel missile with a conical hardened steel tip. This missile is then dropped from a height of over four feet directly on the lens.

Pilla ZEISS VIVX Lenses pass the following standards: ANSI Z87.1 2010, ANSI Z80.3, AS1067-2003, EN1836-2005. With respect to ANSI Z87.1 2010 ; Pilla ZEISS VIVX lenses exceed the High Mass Test.



ALL PILLA ZEISS LENSES ARE SUBJECTED TO ACCELERATED WEATHER TESTS TO CERTIFY COATING DURABILITY.



Impact Testing at Zeiss Labs



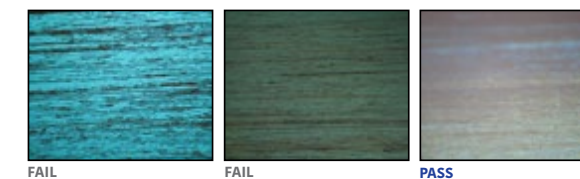
Simulated Weather Testing



ZEISS VIVX LENSES PROVIDE SUPERIOR RESISTANCE TO SCRATCHING.

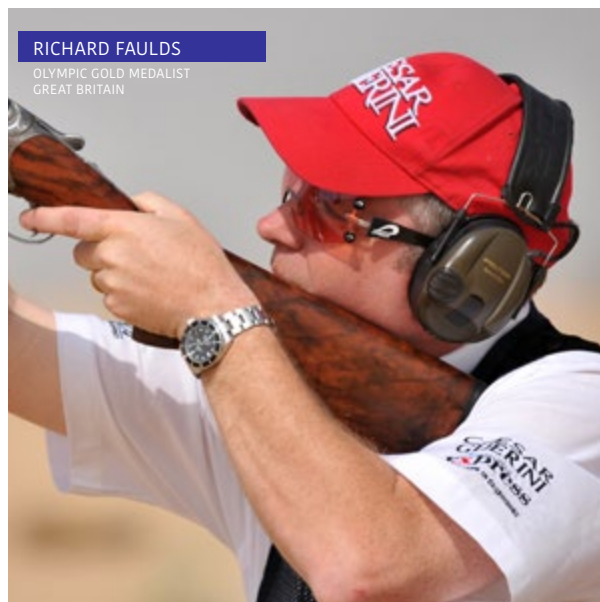


Abrasion Testing



Scratch resistance is not regulated by any international standard. ZEISS produces a self regulated high standard for lens integrity which produces superior coatings capable of withstanding cursory scratching.

Abrasion damage is simulated with a 1Kg eraser applied to the lens surface which strokes the surface for a length of 20mm. The test is complete when 25 strokes have been completed. The results are then analyzed using a microscope to access a visual control. ZEISS VIVX lenses have excellent abrasion resistance. Optical lenses are not scratch proof and should always be handled with care, however, our ZEISS VIVX lenses provide superior resistance to scratching. In the event that a lens does become compromised. We offer a limited lifetime replacement warranty. Please see our website for details.



RICHARD FAULDS
OLYMPIC GOLD MEDALIST
GREAT BRITAIN

Pilla/Zeiss lens technologies are exclusively manufactured for Pilla products.

Every formulation and lens technology used in a Pilla product is an exclusive formulation.

To provide confidence you are purchasing a Pilla/Zeiss product we have put a seal of authenticity on every lens.

If the Zeiss "Z" is not found on the backside of either our dual lens or mask lens frame systems, the lens it is not a Zeiss lens. period.

(This "Z" is applied to Plano lenses only)

THE NET RESULT:

120 HOUR TESTING PROCESS

ZEISS VIVX lenses have excellent coating durability in extreme solar or extreme weather conditions. The use of superior coating technology adds tremendous performance to our lens science.



Look for the "Z" on the left and right side of the rear of the lens. No "Z"... it's not Zeiss. This mark is not visible while wearing the lens.

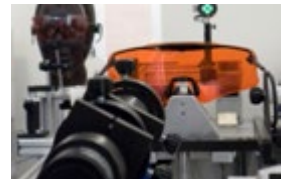
ALL PILLA ZEISS LENSES ARE CERTIFIED AND QUALIFIED BY A ZEISS ENGINEER TO BE OPTICALLY PERFECT.

VIVX IS 15% LIGHTER than POLYCARBONATE

LENS QUALITY INSPECTIONS AND TESTING STANDARDS



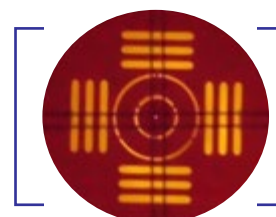
EACH LENS DEVELOPED IS INSPECTED FOR OPTICAL PERFECTION



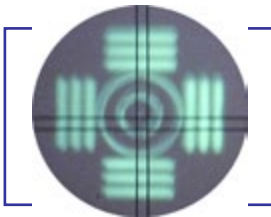
ASTIGMATIC POWER ZERO



Zeiss VIVX 10X SHARPER



ZEISS VIVX



COMPETITION'S LENS

COMPETITION
Poor spherical power
creating haze and distortion.

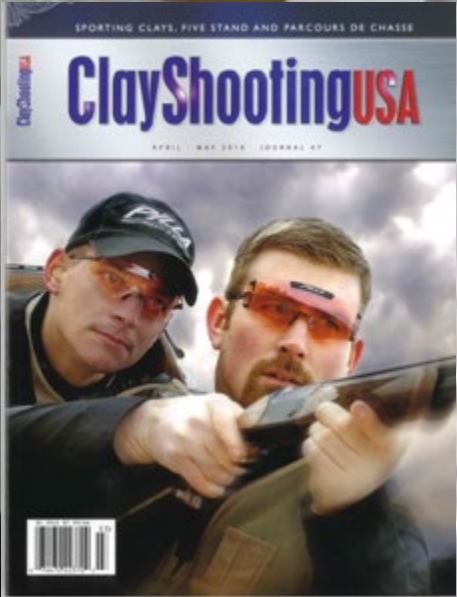
ZEISS VIVX

These lenses deliver zero distortion and objects at a distance are razor sharp.

VIVX OVER 10X SHARPER

ZEISS VIVX OFFERS A HUGE ADVANTAGE IN TARGET ACQUISITION

To achieve perfect focus of objects at a distance, spherical power must be held to an absolute minimum. Zeiss VIVX is almost zero at .001 the normal limit is .120



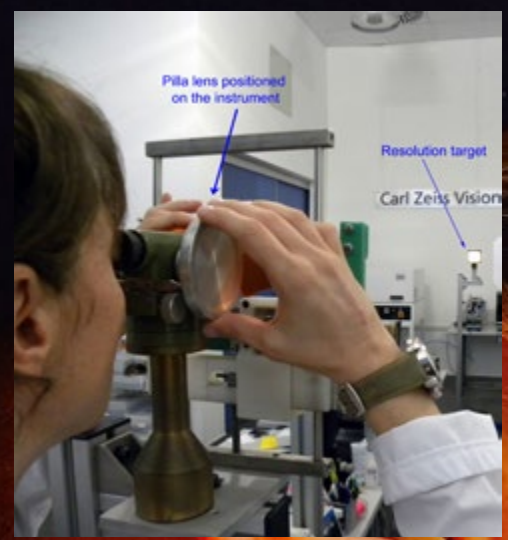
ZEISS VISUAL LENS INSPECTIONS

PILLA ZEISS VIVX lenses are individually inspected by a Zeiss engineer to qualify and certify that the lens has no spots, irregular color patterns, inclusions, different color nuances, marks, scratches, any sort of imperfection. Additionally, the lens is calibrated for consistency of lens filtration science infused into each lens manufactured.

TO PRODUCE THE FINEST HIGH DEFINITION LENSES IN THE WORLD THEY MUST PRODUCE PERFECT RESOLUTION.



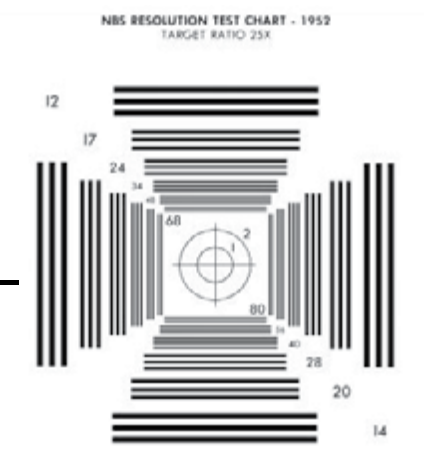
“Pilla glasses, specifically Pilla lenses are by far the best on the market. When competing and trying to win major championships I would rely on nothing else. Clarity and target definition of Pilla performance products is exactly what I need to consistently win major championship.”
Anthony Matarese Jr.
20-Time TEAM USA MEMBER
World FITASC Silver Medal
NATIONAL CHAMPION



LENSES BY Pilla Zeiss Vivx Lenses Resolve Resolution With Perfection Of The Entire Target Ratio At A Distance Of 4.58 Meters.



To Achieve Perfection, The Complete Target Must Be Crisp And Clear With No Bending Of The Lines Orientation. Vertical Lines Must Remain Vertical And Horizontal Lines Must Remain Perfectly Level.



Every Zeiss VIVX filtration enhances the visual resolution of both live game and targets. The combination of critical resolution married to pristine lens clarity provides the wearer a visual experience unlike any other.



ZEISS LABORATORY

ZEISS QUALIFICATION IS A STRINGENT PROCESS WITH NUMEROUS EVALUATIONS OF THE VIVX TECHNOLOGY BEFORE THE LENS IS MOUNTED TO A QUALIFIED PILLA FRAME DESIGN.



ZEISS HISTORY

In 1935, Carl Zeiss patented their first anti-reflective coating and the company is today's industry leader in performance coating technology. VIVX anti-reflectives reduce the undesired reflected light from the surface of the sun lenses and eliminates all ghost images that could affect the visual performance required for a relaxed, comfortable vision.

LENSES BY

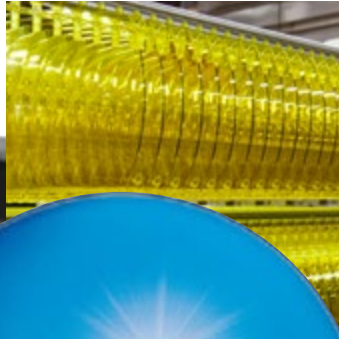
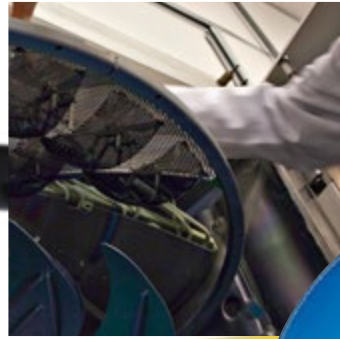
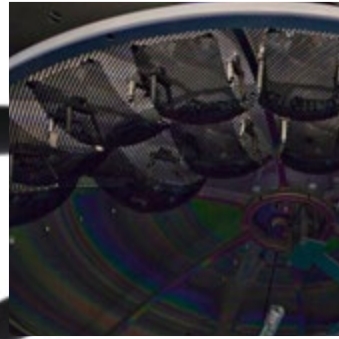
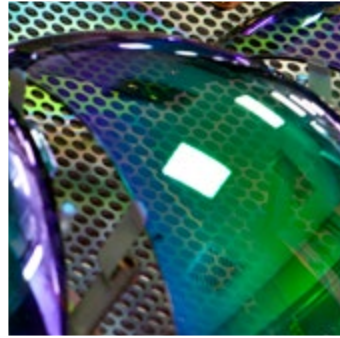
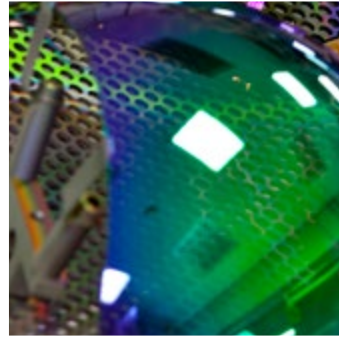
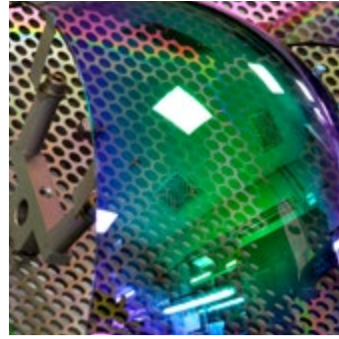


ZEISS EXCLUSIVE COATING TECHNOLOGY

PILLA ZEISS VIVX LENSES ARE TREATED WITH STATE-OF-THE-ART COATING TECHNOLOGY.

Pilla has improved the performance of our anti-reflective coatings with VIVX ANTI-REFLECTIVES. These coatings are a significant improvement over our previous generation lenses resulting in near zero visual noise. This translates to a pristine sight picture without any visual disruption of reflected or refracted light.

ZEISS INVENTED ANTI-REFLECTIVE TECHNOLOGY. ZEISS VIVX LENSES PROVIDE AN INDUSTRY LEADING ANTI-REFLECTIVE TECHNOLOGY.

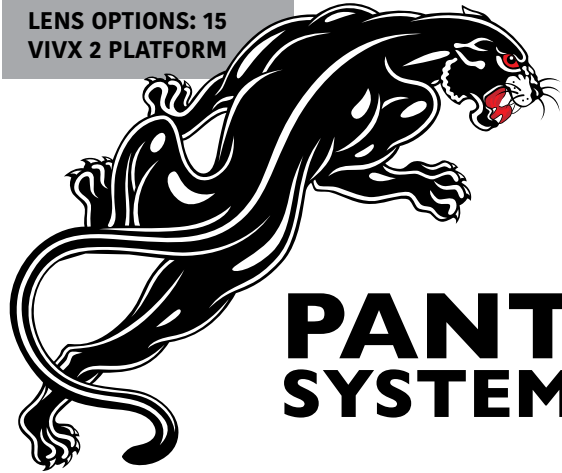


HYDRO-PEL VIVX

- 1. Sheets water directly off the front of the lens.
- 2. Reduces smudging of finger prints.
- 3. Adds a hard coat for easy cleaning and added scratch resistance.

FRAME TECHNOLOGY
PANTHER SYSTEMS

LENS OPTIONS: 15
VIVX 2 PLATFORM



PANTHER SYSTEMS



PANTHER X6 POST

LENSES BY



THE PANTHER X6 OPTICALLY PERFECT 6 BASE MASK IN BOTH AN ADJUSTABLE NOSE AND FIXED NOSE

The Panther System was born in 2002 under a design directive presented to Pilla by current 26 Time World Champion George Digweed. George required a frame system that provided a shooter an experience that felt like they were not wearing shooting glasses. The Panther system revolutionized the shooting industry and is worn by more Champions around the world than any other. Panther products number into the hundreds of thousands world wide making it one of the most widely adopted competitive shooting systems.

The NEW ZEISS X6 system, our 6th generation Panther frame geometry, harnesses a Rubber Co-Injection technology to provide superior adjustment in both X6 & X7 models. The X6 model uses the Pilla patented "Fork" temple balancing system.



The original HiDefSpex Panther - 2002

LENSES BY



PILLA[®]

PERFORMANCE EYEWEAR



PANTHER X7 N0 POST

THE PANTHER SERIES USES OUR PATENTED SNAP-TEC SYSTEM WITH 3 SNAPS FOR EASY REMOVAL AND ATTACHMENT OF THE LENS.



THE PANTHER POST X7 NOSE 5MM OF ADJUSTMENT IN THE NOSE. 3 POSITIONS OF ADJUSTMENT.

PANTHER X7 POST

TITANIUM WRAPPED IN HIGH PERFORMANCE MEGOL RUBBER. THE TOTAL WEIGHT OF THE FRAME IS 28 GRAMS OR 1 OUNCE.

FRAME TECHNOLOGY
PANTHER SYSTEMS

LENS OPTIONS: 16
VIVX 2 PLATFORM

PILLA
PERFORMANCE EYEWEAR

PILLA
PERFORMANCE EYEWEAR

THE PANTHER X7
HIGH WRAP OPTICALLY PERFECT 7 BASE MASK



THE PANTHER X7 TEMPLE CAN BE MANUALLY FORMED TO THE HEAD. BENDING THE TIPS TO CONTOUR TO THE HEAD OR AROUND THE EARS WILL PROVIDE A PERFECT FIT.

LENSES BY
ZEISS

PANTHER X7 VIVX 2 LENS OPTIONS



LENSES BY
ZEISS



PANTHER X7 CHROMA KIT - 18RHC, 44N, 60HCP

PILLA
PERFORMANCE EYEWEAR

LENSES BY



FRAME TECHNOLOGY
PANTHER X2 POST
Rx APPLICATION

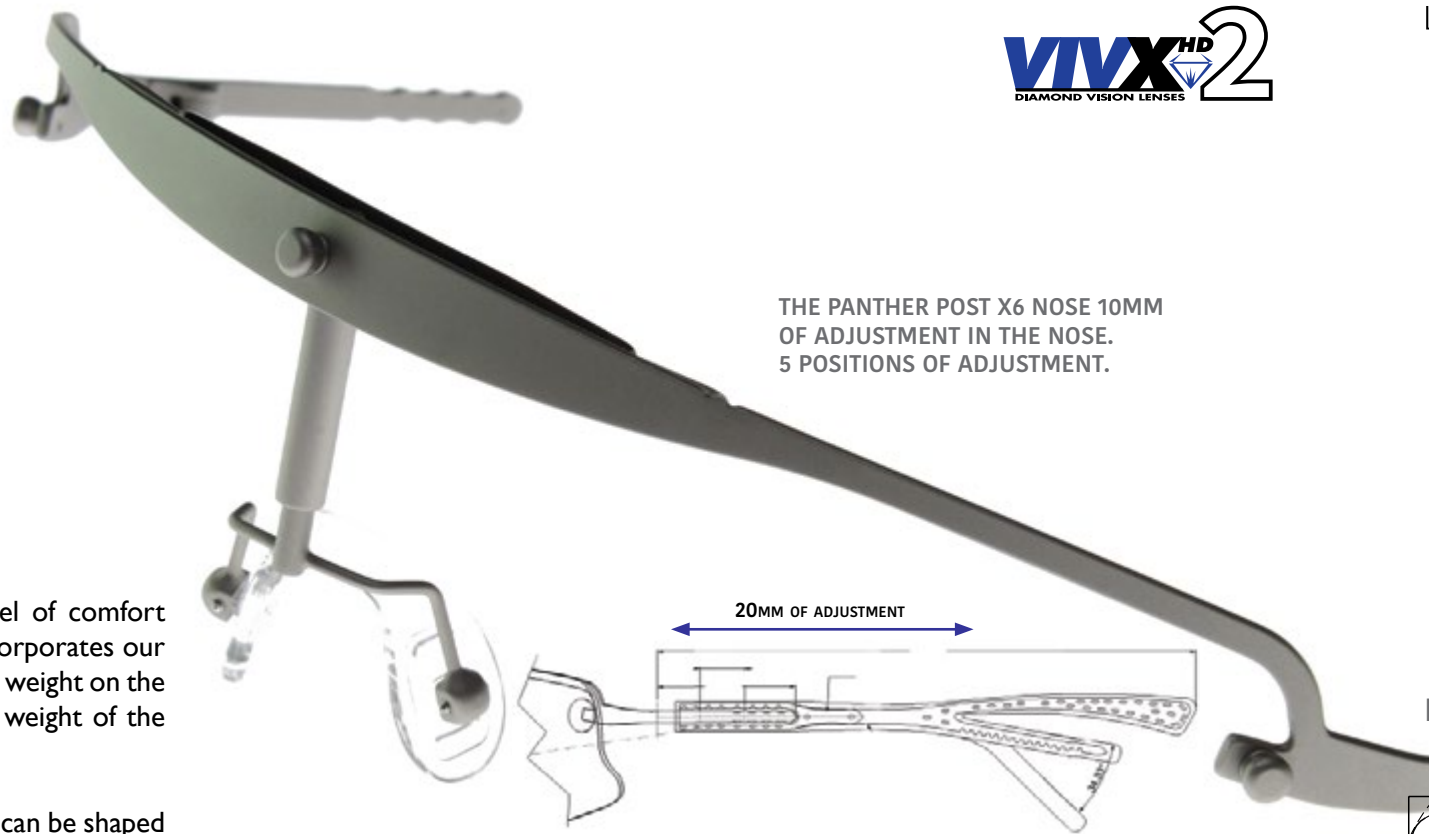
LENS OPTIONS: 15
VIVX 2 PLATFORM

LENSES BY



THE PANTHER Rx SYSTEMS GEN6

PRESCRIPTIVE SOLUTIONS WITH A WIDE RANGE OF CORRECTIVE CAPABILITY.



THE PANTHER POST X6 NOSE 10MM
OF ADJUSTMENT IN THE NOSE.
5 POSITIONS OF ADJUSTMENT.

20MM OF ADJUSTMENT

The new generation Panther X6 Post has raised the level of comfort from the first generation and now in its 6th generation incorporates our unique counter balancing temple geometry to reduce all felt weight on the bridge of the nose. Even with the larger lens size the felt weight of the frame is almost completely removed from the bridge.

The temples are fully adjustable from front to back but also can be shaped to sculpt a shooters head.

The temples can be manually adjusted by forming the temple tips to contour the shooters head. The better the form fit to the head, the better the counter balance in weight distribution works.

FULLY ADJUSTABLE TEMPLES

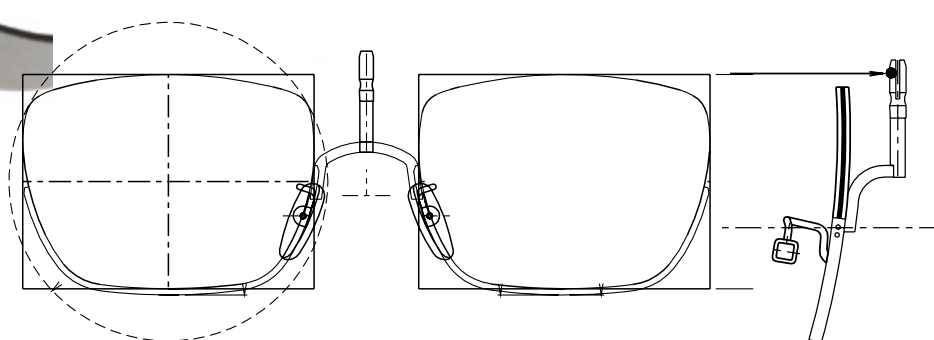
Temples can be extended 5 positions for a customized fit. Additionally, the fork temple geometry can easily be bent to the contour of the archers head. This design reduces the majority of the weight on the bridge of the shield sitting on the nose.



PANTHER X7 POST



PANTHER INSERT



PANTHER X6 POST



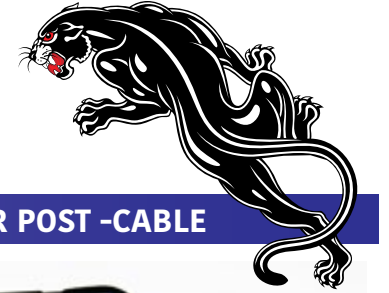
TO UTILIZE A PRESCRIPTIVE INSERT A PANTHER X2 POST
FRAME KIT MUST PURCHASED.

THE PANTHER POST RX INSERT:

The X6 & X7 POST SYSTEMS utilizes a prescriptive insert to provide correction for shooters. The Panther X6 design is capable of delivering a wide range of power requirements. The Panther X7 design it is recommended for a power range of + or - 2.5. If a strong correction is needed we recommend selecting the Panther X6

WORLD PRO STAFF MEMBER
USA SHOOTING TEAM
MORGAN CRAFT
USA
FRAME - PANTHER X6 POST





18RHC

ULTRA DEF HIGH CONTRAST RED
HYBRID CHROMASHIFT AND BACKGROUND NEUTRALIZER
SILVER HIGH CONTRAST FILTER
TRANSMITTANCE: 18%
FULL SUN/HIGH LIGHT IN GREY OVERCAST

**PANTHER SERIES NEW
ZEISS VIVX 2 LENS SCIENCE**

58ED

ENHANCED DEFINITION
TRANSMITTANCE: 58%
MEDIUM LIGHTING/YELLOW LIGHT
HIGH DEFINITION BALANCED LENS

32MXB

BOOST TARGET ORANGE WITH
HIGH CONTRAST FILTER
CHROMA SHIFT ENHANCED
TRANSMITTANCE: 32%
MEDIUM LIGHTING
BRONZE HC FILTER

69MWN

ULTRA DEF HIGH CONTRAST RED
HYBRID CHROMASHIFT AND BACKGROUND NEUTRALIZER
SILVER HIGH CONTRAST FILTER FOR LOW LIGHT
TRANSMITTANCE: 69%
LOW LIGHT/GREY OVERCAST

THE "FORK" TEMPLE CAN BE MANUALLY FORMED TO THE HEAD. BENDING THE TIPS CAN BE DONE BOTH VERTICALLY AS WELL AS HORIZONTALLY.

PANTHER X6 POST - FRAME OPTIONS

PANTHER X6 POST - FORK



PANTHER POST G3 - STRAIGHT



PANTHER POST -CABLE



PANTHER X6 NO POST - FRAME OPTIONS

PANTHER X - CABLE



PANTHER X - STRAIGHT



PANTHER X6 - FORK



PANTHER X7 - FRAME OPTIONS

PANTHER X7 POST



PANTHER X7 NO POST



* 54HC only available in Panther X7 No Post and Post.





PANTHER KIT OPTIONS - AVAILABLE IN ALL PANTHER MODELS

LENSES BY



TRUCK KIT

TRU COLOR KIT

26ED • 44ED • 76HC

A true balance of visual spectrum color enhancement. This kit provides a shooter a full sun to low light lens option. Perfect for both clays and hunting.



BOOST KIT

NEUTRALIZER AND ENHANCER

22N • 45MAX • 60HCP

This kit is tuned to provide the shooter with the maximum boost in pink and orange targets. A full sun, medium, and low light lens is included with a direct focus on spiking these colors of targets.



NEW 60HIGH CONTRAST PERSIMMON
Juice Target Orange in Low Light.

BANK KIT

BACKGROUND NEUTRALIZER KIT

22N • 44N • 66N

A specialty kit providing a full sun, medium, and low light background neutralizer technology. This kit is perfect for the shooter looking to manage against foliage.



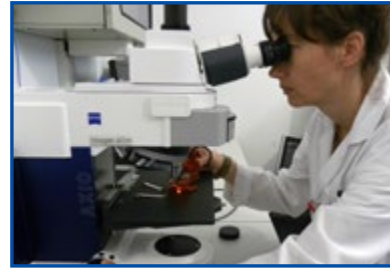
NEW

SPORTSMAN KIT

HIGH LIGHT - LOW LIGHT

10ED • 58ED • 94HC

This kit offers the widest light management tool for the shooter. This is a perfect mixed kit for a shooter that both hunts and shoots clays. This kit uses lenses with universal color enhancers for clays and works extremely well on small game.



3D KIT

DIMENSIONAL TARGET KIT

26ED • 50RHC • 66N

The lenses in this kit are extremely balanced in enhancing the color spectrum and boosting registration of orange and pink targets while even pushing rich definition in black targets. This kit provides crisp detailed definition without saturating color.



PANTHER KIT OPTIONS - AVAILABLE IN ALL PANTHER MODELS

LENSES BY



NEW

CHROMA KIT

INTENSE COLOR RESOLUTION

18RHC • 44N • 60HCP

The Chroma Kit utilizes our newest spectral color enhancement technology called Chromashift. This kit has a vivid full sun lens, a medium lighting condition lens with a background neutralizer, and an accelerated low light lens in the 60HCP. This kit is super for the clay shooter looking for a specialty kit from full sun to low light.



NEW

MAX 3.0 KIT

TARGET ORANGE MANAGEMENT

32MXB, 45MAX, 69MWN

The Max 3.0 Kit is for the clay shooter looking for the maximum enhancement of Orange Clay targets. This kit in full Sun and Medium Lighting conditions enhances the orange part of the visual spectrum by 600% over a standard lens. The new 32MXB lens is a beautiful lens in full sun where there are no grey conditions. The New 69MWN lens is a super low light lens using the Max spectral technology but also incorporates a background neutralizer.



FRAME TECHNOLOGY
OUTLAW X SYSTEM

WRAP OPTIONS : 2
FRAME COLORS : 4
LENS OPTIONS: 15
VIVX 2 PLATFORM

PILLA[®]
PERFORMANCE EYEWEAR

LENSES BY



PILLA[®]
PERFORMANCE EYEWEAR

LENSES BY



THE OUTLAW X6/X7 SYSTEM

A WIDE VISUAL SIGHT PICTURE



OUTLAW X - NOSE

The nose bridge is made of soft silicone rubber and can be customized to fit any shape nose by expanding the width of the nose assembly.



NO OTHER SHOOTING GLASS TECHNOLOGY PROVIDES MORE SIGHT PICTURE THAN THE OUTLAW X SERIES. THE VISUAL FIELD IS COMPLETELY UNOBSTRUCTED AS THERE IS NO FRONT FRAME.

OUTLAW X SYSTEM

The Outlaw X is powered by ZEISS VIVX lenses and is certified to be a perfect optical instrument. The front bar has been taken out of the frame so the visual site picture is unmatched. The shooter is presented with an unobstructed view without any imperfection or visual disruption. The temple design allows for extremely quick changing of the lens technology to maximize the performance of the product in any lighting condition.



The new Outlaw Series Chroma Kit:
18RHC, 44N, 60HCP

GEORGE DIGWEED MBE

**26 TIMES
WORLD CHAMPION**





LENSES BY

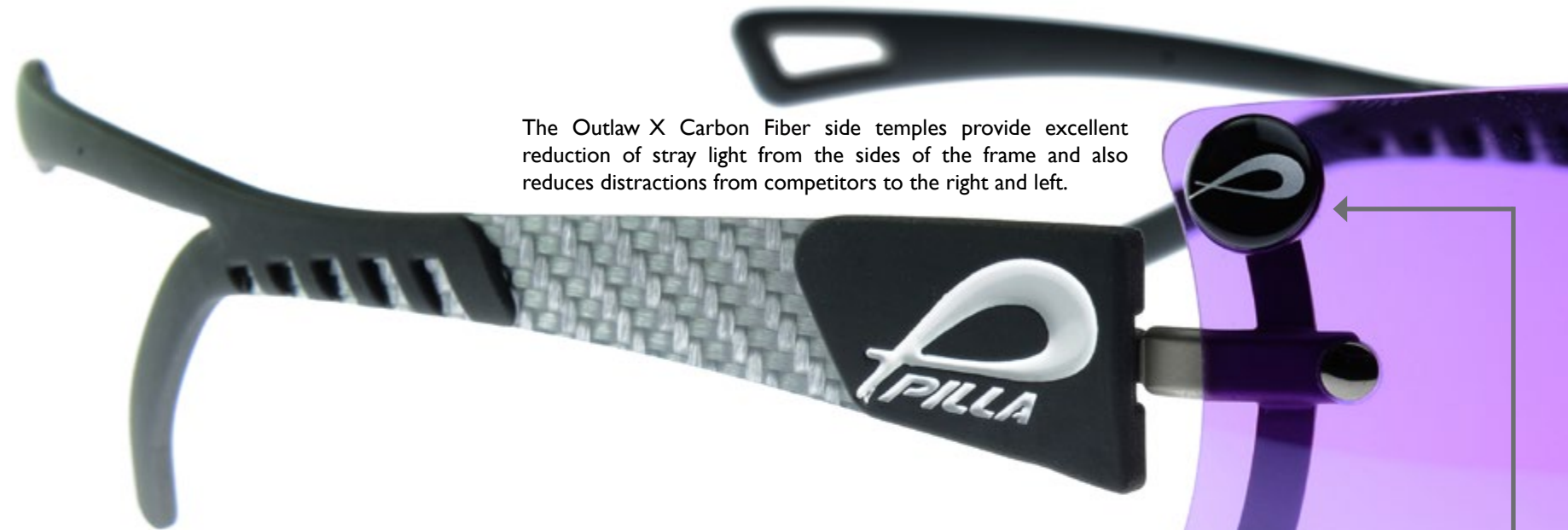


LENSES BY



THE OUTLAW X6/X7 SYSTEM

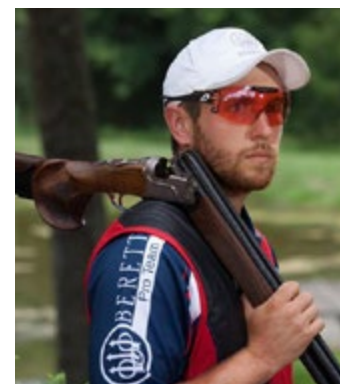
A WIDE VISUAL SIGHT PICTURE



The Outlaw X Carbon Fiber side temples provide excellent reduction of stray light from the sides of the frame and also reduces distractions from competitors to the right and left.

The Outlaw X systems incorporate our unique counter balancing temple geometry to reduce all felt weight on the bridge of the nose. The temple arms are intentionally designed to wrap the head. We have increase the length by 6mm to create this geometry.

The temples can be manually adjusted by forming the temple tips to contour the shooters head. The better the form fit to the head, the better the counter balance in weight distribution works.



OUTLAW X6 is the choice of VINCENT HANCOCK - USA 2 TIME OLYMPIC GOLD MEDALIST



QUICK LENS CHANGE

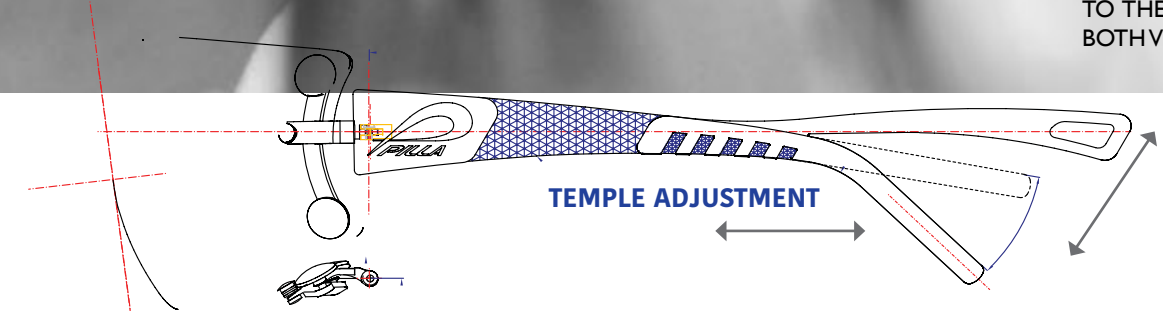
Our patented Snap-tech technology has been engineered to provide a solid fulcrum for easy changing of our temple arms to maximize your visual performance with the optimal light transmission. The wide temple creates a flat surface for easy leverage to snap the temple in place and remove.



RAM-AIR VENTING

AIR FLOW

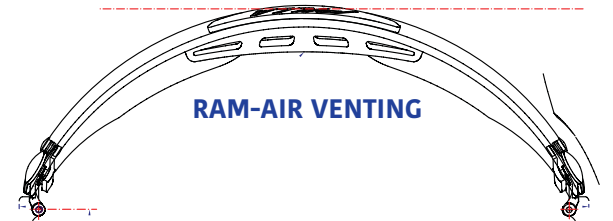
THE "FORK" TEMPLE CAN BE MANUALLY FORMED TO THE HEAD. BENDING THE TIPS CAN BE DONE BOTH VERTICALLY AS WELL AS HORIZONTALLY.



TEMPLE ADJUSTMENT

TEMPLE ARM ADJUSTMENT

Temple tips are easily adjusted to customize fit and provide optimal comfort. The temple tip is made of a high performance rubber and has a titanium inner core.



RAM-AIR VENTING

RAM-AIR VENTING

Every lens has an integrated rubber sweat bar to hold the lens off the forehead and to prevent smudging of the backside of the lens. Additionally, the rubber sweat bar has integrated vents to improve air flow on the back side of the lens to reduce any potential fogging.



THE OUTLAW X6/X7 PRESCRIPTIVE SYSTEM

2 OPTIONS ARE AVAILABLE FOR THE INSERT - MEDIUM AND LARGE

LENSES BY



FRAME TECHNOLOGY
OUTLAW X SYSTEM

WRAP OPTIONS : 2
FRAME COLORS : 4
LENS OPTIONS: 15



OUTLAW X CARBON FIBER FRAME OPTIONS - BOTH OUTLAW X6 AND OUTLAW X7

OUTLAW X - BLACK CARBON

OUTLAW X - SILVER CARBON

OUTLAW X - GREY CARBON

OUTLAW X - WHITE CARBON



LENSES BY



OUTLAW XC FRAMES -

This is an adjustable cable wrap temple - Available in both the Outlaw X6 and Outlaw X7



THE OUTLAW X RX INSERT:

The Outlaw utilizes a prescriptive insert to provide correction for shooters. The design is capable of delivering a significant range of power requirements. The insert is available for both the X6 and X7 models. (The medium insert must be used for the X7)

WORLD PRO STAFF MEMBER
WORLD CHAMPION
OLYMPIC SILVER MEDALIST
HAKAN DAHLBY
SWEDEN
FRAME - OUTLAW X6



OUTLAW X FRAME SIZES

MODEL X6 - MEDIUM TO LARGE
MODEL X7 - SMALL TO MEDIUM

OUTLAW X6

OUTLAW X7



OUTLAW X6/X7 SYSTEM VIVX 2 LENS OPTIONS

10ED 18RHC 22N 26ED 32MXB 44N 44ED 45Max 50RHC 58ED 60HCP 66N 69MWN 76HC 94HC



TRUCK KIT

TRU COLOR KIT
26ED • 44ED • 76HC

A true balance of visual spectrum color enhancement. This kit provides a shooter a full sun to low light lens option. Perfect for both clays and hunting.



BOOST KIT

NEUTRALIZER AND ENHANCER
22N • 45MAX • 60HCP

This kit is tuned to provide the shooter with the maximum boost in pink and orange targets. A full sun, medium, and low light lens is included with a direct focus on spiking these colors of targets.



NEW 60HIGH CONTRAST PERSIMMON Juice Target Orange in Low Light.

BANK KIT

BACKGROUND NEUTRALIZER KIT
22N • 44N • 66N

A specialty kit providing a full sun, medium, and low light background neutralizer technology. This kit is perfect for the shooter looking to manage against foliage.

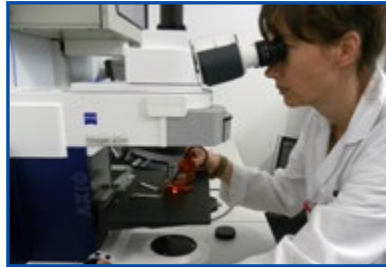


NEW

SPORTSMAN KIT

HIGH LIGHT - LOW LIGHT
10ED • 58ED • 94HC

This kit offers the widest light management tool for the shooter. This is a perfect mixed kit for a shooter that both hunts and shoots clays. Included in this kit is the new 45max; a fantastic all around color enhancer for clays and works extremely well on small game.



3D KIT

DIMENSIONAL TARGET KIT
26ED • 50RHC • 66N

The lenses in this kit are extremely balanced in enhancing the color spectrum and boosting registration of orange and pink targets while even pushing rich definition in black targets. This kit provides crisp detailed definition without saturating color.



NEW

CHROMA KIT

INTENSE COLOR RESOLUTION
18RHC • 44N • 60HCP

The Chroma Kit utilizes our newest spectral color enhancement technology called Chromashift. This kit has a vivid full sun lens, a medium lighting condition lens with a background neutralizer, and an accelerated low light lens in the 60HCP. This kit is super for the clay shooter looking for a specialty kit from full sun to low light.



NEW

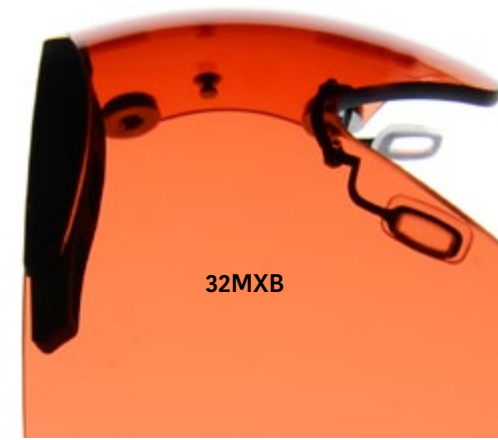
MAX 3.0 KIT

TARGET ORANGE MANAGEMENT
32MXB, 45MAX, 69MWN

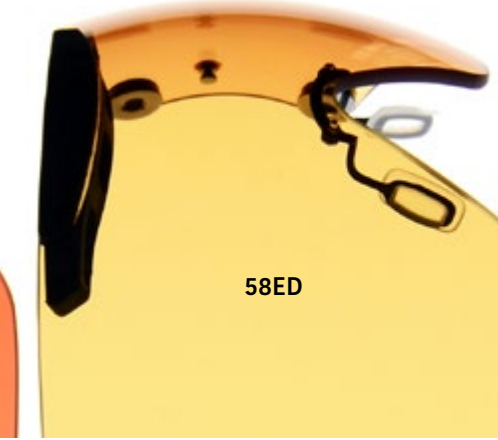
The Max 3.0 Kit is for the clay shooter looking for the maximum enhancement of Orange Clay targets. This kit in full Sun and Medium Lighting conditions enhances the orange part of the visual spectrum by 600% over a standard lens. The new 32MXB lens is a beautiful lens in full sun where there are no grey conditions. The New 69MWN lens is a super low light lens using the Max spectral technology but also incorporates a background neutralizer.



18RHC



32MXB



58ED



69MWN

FRAME TECHNOLOGY
MAGNETO SYSTEM

FRAME OPTIONS : 2
LENS OPTIONS: 9
VIVX PLATFORM



LENSES BY



THE MAGNETO SYSTEM

NEODYMIUM MAGNETIC TRANSPORT

The PILLA Magneto is the ultimate in performance eyewear technology for Shooting Sports. The frame is surgical steel fused with titanium, making it ultra light weight and durable.

It comes packaged standard with 3 VIVX lenses to cover almost any lighting condition. The 22ED lens is perfect for very bright conditions with stray light and reflective surfaces such as water and sand. The 42 Enhanced Definition, the standard outdoor lens, is 20% brighter and perfect for sunny days giving the athlete an "Unfair Advantage." The 58 High Contrast lens can be used for cloudy and rainy days. The high contrast filtration cuts through fog like a knife through butter. The 78 Enhanced Definition is sometimes referred to as the light bulb lens. It gives the impression of putting the lights back on when it's dark, is perfect for indoors or shooting at dusk, and allows the eye to make better use of the available light. With lenses that slide on and off using neodymium magnets, the Magneto boasts the fastest and easiest lens changing system available anywhere. Combined with its unique filtrations, this set gives the athlete an unfair advantage and is sure to be the last pair of glasses you'll ever want to buy.

OUTLAW KIT OPTIONS



EDF KIT - 22ED, 78HC, 42ED



HCN KIT - 58HC, 44N, 52HC



MAX KIT - 22ED, 38Max, 62Max

ENHANCED DEFINITION KIT - 22ED, 42ED, 78HC - perfect all around kit for brighter geography

HIGH CONTRAST KIT - 58HC, 44N, 52HC - a specialty kit providing high contrast lens science

MAX ORANGE 2.0 KIT - 22ED, 38MAX, 62MAX - perfect for the target shooter looking for maximum enhancement of an orange dome target orange



LENSES BY



Magneto : Cable Temple

ACCESSORY LENS OPTION



2016 Magneto includes with 4 temple lengths for a perfect fit. 115mm, 125mm, 135mm, and the cable temple.



MAGNETO RX MODEL

The magneto Rx is a completely integrated solution for the those shooters in need of correction. This design will accommodate any level of corrective need

**VIVX LENS
OPTIONS**



LENSES BY

LENS TECHNOLOGY SHOOTING



WORLD PRO STAFF MEMBER
WORLD CHAMPION
CHERYL HALL
GREAT BRITAIN
FRAME - OUTLAW X6



ENHANCED DEFINITION KIT - 22ED, 78HC, 42ED



HIGH CONTRAST KIT - 44N, 58HC, 52HC



MAX ORANGE 2.0 KIT - 22ED, 38Max, 62Max



VIVX 2 - 54HC

VIVX 2 - 36MX



ACCESSORY LENS OPTION -



ALL VIVX LENS FORMULATIONS MAY NOT BE AVAILABLE IN THE PANTHER AND OUTLAW SYSTEMS. PLEASE CONTACT A CUSTOMER SERVICE REPRESENTATIVE FOR DETAILS. SUBSTITUTIONS WILL BE MADE WITH SIMILAR VIVX 2 LENSES.

MODELS AVAILABLE WITH VIVX LENSES

- PANTHER X
- PANTHER X POST
- OUTLAW X
- MAGNETO



VIGILANTE

PILLA
PERFORMANCE EYEWEAR

VIGILANTE SERIES

LENSES BY
ZEISS

Light Grey/Black - Frame



94HC VIVX 2
Lens Shown

FIXED TEMPLE WITH FRONT BAR OF THE FRAME
REMOVED FOR FULL VISUAL SIGHT PICTURE



RUBBER SWEAT BAR

High performance Megol Rubber Nose. Minimal profile to avoid visual distraction for perfect sighting across the nose bridge.

BLACK OUT EDITION



26ED VIVX 2 Lens Shown

PILLA
PERFORMANCE EYEWEAR

VIGILANTE SERIES

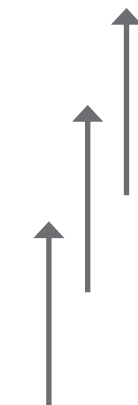
LENSES BY

ZEISS



RAM-AIR VENTING

AIR FLOW



Temple tips are easily adjusted to customize fit and provide optimal comfort. The temple tip is made of a high performance rubber and has a titanium inner core.

"ED" - Enhanced Definition
True Color Saturation
"HC" - High Contrast
Crisp Definition in diminishing lighting conditions.
"N" - Neutralizer
Kills green

← Full Sun Medium Light Low Light →
10ED 22N 26ED 44N 44ED 45MAX 54HC 66N 94HC



RENEGADE
HUNTING

PILLA
PERFORMANCE EYEWEAR

RENEGADE HUNTING EDITION

The Renegade is a special field pair of glasses made of Titanium and Surgical Steel and fit with seven field lenses ranging from full sun to low light.

These lenses are perfect for small game and are extremely precise for a variety of bird species. The lens filtrations are designed to accelerate very specific pieces of the visual spectrum to enhance feathers and push natural color. Each filtration is formulated to produce high definition color through high contrast science and color manipulation.

Each of the lenses fit to the Renegade hunting series protects your eyes not only from twigs and stray shot but the lenses protect from 100% of the sun's harmful UV rays. The lens blocks 100% of UVA, UVB, and UVC. Our UV protection is embedded into the lens substrate and blocks 100% of the harmful blue light or high energy visible wavelengths (HEV) up to precisely 400nm.

The Renegade lenses exceed the following standards:
ANSI Z87.1, High Velocity Mass Impact Test,
ANSI Z80.3, AS1067-2003, EN1836-2005

**THE WORLDS PREMIER HUNTING LIGHT MANAGEMENT TECHNOLOGY
FOR MAXIMUM LIVE GAME ACQUISITION IN HIGH DEFINITION**



Each of the lenses is coated with a proprietary high performance 7 layer Anti-Reflective as well as Pilla's Hydrolio coating. This coating is an essential element for field glasses, adding an extra hard coat to the lens while making the lens extremely easy to clean. Further, this proprietary coating sheets water off the lens in adverse conditions.

LENSES BY

RENEGADE HUNTING SERIES



PILLA
PERFORMANCE EYEWEAR



AVAILABLE LENS TECHNOLOGY:
Renegade Models \$329 (V25HDX - \$379)

- S15HDX** - HD BRONZE FULL SUN
- S40HDX** - HD BRONZE MEDIUM SUN
- S55HDX** - HD BRONZE OVERCAST
- V25HDX** - PHOTOCROMATIC FULL SUN TO LOW LIGHT
- 58HCHDX** - HIGH CONTRAST MAZE - MEDIUM GREY LIGHT
- 50RHDX** - VERMILION RED HIGH CONTRAST - MEDIUM LIGHT COLOR BOOST
- G85HDX** - HIGH VALUE MAZE - LOW LIGHT



RENEGADE HUNTING SERIES



Ultra Soft Silicone Nose Pads



RENEGADE SPECS:

- 8 Base Full Wrap Field Glasses
- High Wrap Frame to prevent wind, stray shot, and twigs from getting into the eye. The Renegade provides full coverage for the field.
- Titanium/Surgical Steel Frame
- Ultra Soft Silicone Nose Pads
- 140mm Temple Width
- Eye Size - 66mm x 40mm
- Frame and lens weight : Total of 1 oz/28 grams
- 7 Layer Anti-Reflective Coating
- Hydrolio Coating

THE RENEGADE IS AVAILABLE IN PRESCRIPTIVE SOLUTIONS
All filtrations are available in correction.



**FRAME TECHNOLOGY
500 SERIES**

**FRAME OPTIONS : 3
LENS OPTIONS: 8
COLORTRAST LENSES**

PILLA
VISUAL EQUIPMENT FOR SPORT

COLORTRAST LENSES BY



500 SERIES - 540 • 560 • 580

STAINLESS STEEL FRAME CHASSIS

**540 & 580 FRAME - THESE ARE EXCELLENT
OPTIONS FOR PRESCRIPTIVE NEEDS.**



**580 FRAME - 8 base wrap - 8 PLANO FILTRATIONS AND ALL PILLA LENS
FILTRATIONS INCLUDING VIVX AVAILABLE IN PRESCRIPTION**



**580 FRAME
8 BASE PLANO & RX**

Ultra Soft Silicone
Nose Pads

**Rx
CAPABLE**

500 SERIES OVERVIEW

The 500 Series is a entry level performance piece of equipment for the shooting enthusiast. This exciting new platform molded from high grade stainless steel benefits from years of frame design experience. The frame provides a completely unobstructed sight picture and a perfectly balanced frame geometry that reduces perceived weight. At 1.25 oz, the frame provides a feather weight design for all day comfort. This feather weight design provides all day comfort. The 500 Series integrates the Pilla signature “fork” temple tip made of a high performance rubber called Megol. The “fork” tip is easily adjusted by bending the tips to contour the shooters head. When properly adjusted the weight of the nose bridge is almost completely erased. The nose assembly of the 500 Series borrows from the minimalistic approach of the Pilla VIVX collection. The tiny nose is not seen by the shooter even when looking at a severe angle through the middle of the mask. Each nose has two silicone soft rubber



**540 FRAME
4 base Rx only**

**Rx
CAPABLE**

A wide range of corrective needs can be serviced with the 540 model.



SHADOW BOX ANCHORS

SHADOW BOX ANCHORS

The lens is edged to create a slot that is placed into the frame at the nose and then the temple. The entire frame assembly acts like a big spring to hold the lens. The 580 and 540 lenses change extremely easy with minimal pressure. This new system allows for quick changing of the 580 and 540 lenses to maximize the full compliment of the 8 new colortrast filtrations.



560 MASK FRAME

INVERTED SNAP TECH

The 560 uses the same patented snap tech technology from our Panther X platform but attaches to the inside of the front bar.

500 SERIES LENS TECHNOLOGIES

COLORTRAST ZEISS LENSES - HYDRO-PEL COATED



500 SERIES KITS:

- HIGH LIGHT SHOOTING KIT - 25CB, 35CV, 45CO
- LOW LIGHT SHOOTING KIT - 50CV, 65CP, 70CY
- TWO LENS SHOOTING HI-LO KIT - 25CB, 85CY

- BIRD KIT - 45CO, 85CY
- GAME KIT - 25CB, 50CV, 85CY



FRAME TECHNOLOGY

SEBRING SYSTEM
ALL LENS OPTIONS

FRAME OPTIONS: 2

PRESCRIPTIVE AND PLANO SOLUTIONS

LEGACY COLLECTION

SEBRING G2

LENSES BY



Rx
CAPABLE



The Sebring is Fully Adjustable temple arms have 20mm of adjustment in 5mm increments.



The Sebring Adjustable Bridge - 3 Positions with up to 6mm of adjustment using our patented ratch tec system.



STANDARD 3 LENS KIT - 1 FRAME/3 PAIR LENSES

MAX ORANGE HDX 5 LENS KIT - 1 FRAME/5 PAIR LENSES

BALLISTX KIT SPECIAL AVAILABLE - CALL YOUR CUSTOMER SERVICE REPRESENTATIVE FOR DETAILS

THE SEBRING LENS ANCHOR™ SYSTEM

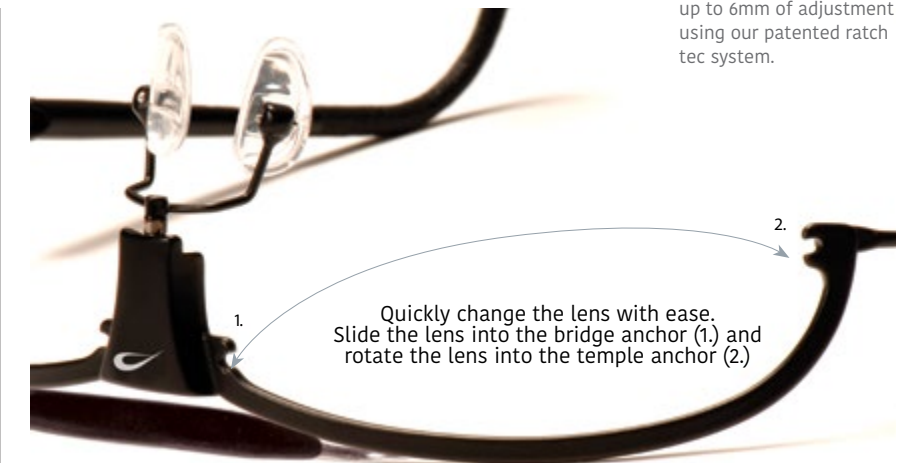
This patented system was designed to overcome two major issues present in all frames that offer lens interchangeability...

1. COMPETITORS POSTS BEND AND CREATE FIT PROBLEMS FOR LENSES.

Over time, this becomes a bigger problem as lenses will not fit securely in the frame. Pilla created the "lens anchor" system to provide perfect fit without the possibility of the lens becoming loose. Since we use our exclusive Ballistx HDX lenses, which are made of a bullet-proof material, we can drill the lens without risk of cracking, allowing us to thread a bolt directly into the lens. This bolt then slides into a channel on the frame for a tight secure fit.

2. CHANGING A LENS IS TYPICALLY VERY DIFFICULT.

Pilla's patented "Lens Anchor" allows the user to quickly and easily change the lens.



Quickly change the lens with ease. Slide the lens into the bridge anchor (1.) and rotate the lens into the temple anchor (2.)



DANIA VIZZI
USA SHOOTING TEAM
FRAME: SEBRING 8

SEBRING AVAILABLE IN
G2 (6 BASE FRAME - Medium to Large) & LEGACY SEBRING 8 (8 BASE FRAME - SMALL FIT)

CUSTOMIZE YOUR KIT WITH ANY BALLISTX LENS

ORDER AS STANDARD KIT OR
MAKE YOUR OWN

STANDARD KITS

MAX KIT
20M, 40M, 65M, 80M
HIGH CONTRAST KIT
25R, 50R, 65G, 85G
HD KIT
S15, S25, S40, S55
VARIA KIT
V25, V65, S99



MAX KIT HIGH CONTRAST KIT HD KIT VARIA KIT

FRAME TECHNOLOGY

TOMCAT
ALL LENS OPTIONS

TOMCAT

Rx
CAPABLE

3-Position Adjustable Nose -
9mm of adjustment available



Patented Carbon Fiber Fork Temple Arm
Complete reduction of weight



Fork Temple Arm cradles the head

Frame weight
less than 1 oz.



Super-Thin Galvanized
Frame Architecture

Quickly change the lens with ease.
Slide the lens into the bridge anchor (1) and rotate
the lens into the temple anchor (2.)

CUSTOMIZE YOUR KIT WITH ANY BALLISTX LENS

ORDER AS STANDARD KIT OR
MAKE YOUR OWN

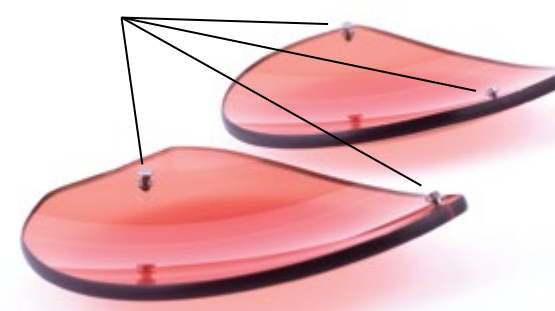
STANDARD KITS

MAX KIT
20M, 40M, 65M, 80M
HIGH CONTRAST KIT
25R, 50R, 65G, 85G
HD KIT
S15, S25, S40, S55
VARIA KIT
V25, V65, S99



MAX KIT HIGH CONTRAST KIT HD KIT VARIA KIT

The Lens Anchor system provides perfect fit without the possibility of the lens becoming loose. The Ballistx HDX lenses can drill the lens without risk of cracking, allowing us to thread a bolt directly into the lens. This bolt then slides into a channel on the frame for a tight secure fit.



BALLISTX KIT SPECIAL AVAILABLE - CALL YOUR CUSTOMER SERVICE REPRESENTATIVE FOR DETAILS

PILLA
VISUAL EQUIPMENT FOR SPORT

PRESCRIPTIVE AND PLANO SOLUTIONS LEGACY COLLECTION

FRAME TECHNOLOGY

MERLIN
SPORTSMAN LENSES
3 FILTRATIONS

PRESCRIPTIVE AND PLANO SOLUTIONS

LEGACY COLLECTION



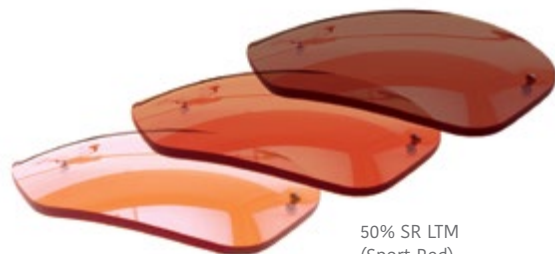
MERLIN

Rx
CAPABLE



Lenses are quickly interchangeable for use in multiple lighting conditions.

The Merlin Kit is offered with a complete Pilla Ballistix Light Management system optimized for any lighting condition. The kit features 1 Frame and 3 pair of lenses.



50% SR LTM (Sport Red) Overcast
75% SO LTM (Sport Orange) Low Light



Quickly change the lens with ease. Slide the lens into the bridge anchor (1.) and rotate the lens into the temple anchor (2.)



THE MERLIN LENS ANCHOR™ SYSTEM

This patented system was designed to overcome two major issues present in all frames that offer lens interchangeability...

1. COMPETITORS POSTS BEND AND CREATE FIT PROBLEMS FOR LENSES. Over time, this becomes a bigger problem as lenses will not fit securely in the frame. Pilla created the "lens anchor" system to provide perfect fit without the possibility of the lens becoming loose. Since we use our exclusive Ballistix Sport lenses, which are made of a bullet-proof material, we can drill the lens without risk of cracking, allowing us to thread a bolt directly into the lens. This bolt then slides into a channel on the frame for a tight secure fit.
2. CHANGING A LENS IS TYPICALLY VERY DIFFICULT. Pilla's patented "Lens Anchor" allows the user to quickly and easily change the lens.

CASE OPTIONS

CARBON FIBER TO LEATHER



LARGE STORAGE ROLL

LEATHER ROLL
Genuine leather with leather tasslet ties. Available in Large and Small



SMALL STORAGE ROLL



LARGE VAULT

BALLISTIC NYLON VAULT
EVA Case available in Large and Small. Large will fit a 3 lens kit.



SMALL VAULT



WAXED COTTON AND LEATHER BOX
Lined with Mole Skin and Real Leather Corners. Heavy Duty Waxed Cotton Wrapped Box.

ALUMINUM BOX
Flight Construction. Aluminum Trim and Ballistic Wrap. Aluminum Box available in 3 compartment large box and single compartment box.



3 COMPARTMENT



SINGLE COMPARTMENT BOX

SHOOTING TOWEL
Towel made of 100% cotton. Embroidered Pilla Logo. Supplied with "D" ring for attachment to belt. Size: 13 x 20



**PILLA
APPAREL**

HATS TO STORM GEAR



**PILLA
SIGNAGE**



LOW PROFILE HAT
Available in Flex Fit and Cotton Caps.



LONG SLEEVE POLO
Pique Cotton



SHORT SLEEVE POLO
Pique Cotton



BLACK COTTON T-SHIRT
Cotton Blend



NEOPRENE JACKET
Great for All Seasons



LEATHER POUCH
Genuine Leather



FEATHER FLAG
10' High



STORE BANNER - 3', 6', 8'
All weather banner with grommets.



908 ETHAN ALLEN HIGHWAY
RIDGEFIELD, CY 06877
USA
p 203.894.3265
f 203.894.3269
info@pillasport.com
www.pillasport.com